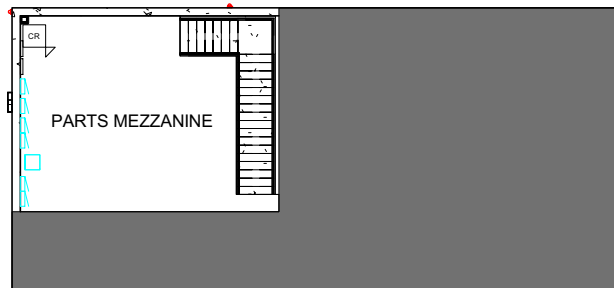
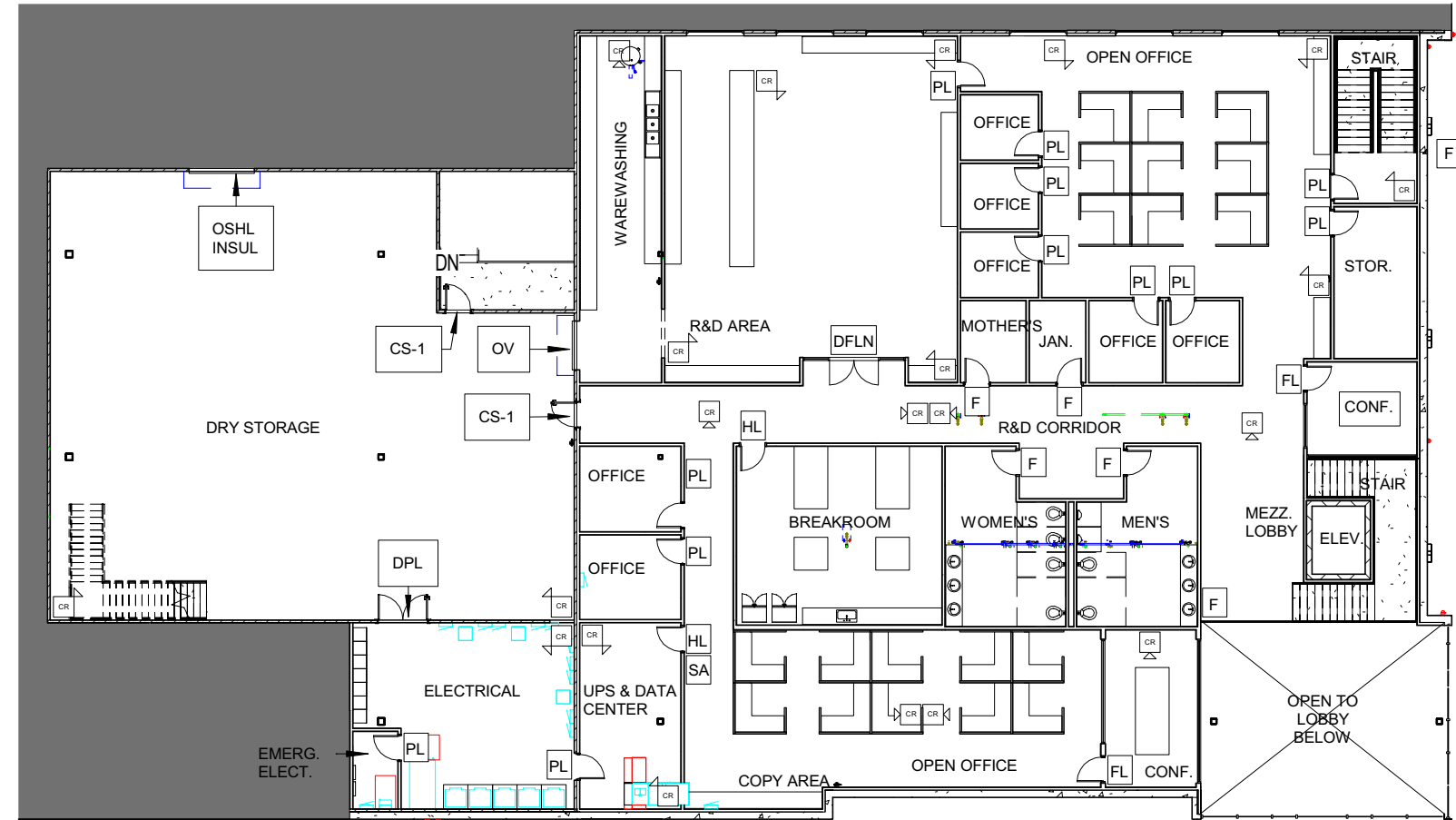


KEY NOTE LEGEND	
FIXED CONCEALED STUNT PANIC DURESS ALARM BUTTON	
ACCESS TO ELEVATOR CONTROLLED BY 1ST FLOOR KEY FOB	
PERIMETER BUZZER TIED TO CCTV FOR VIDEO	
EXTERIOR DOOR WITH SEE THROUGH REINFORCED SECURITY WINDOW	
VANDAL PROOF/RESISTANT MOTION SENSOR SECURITY ALERT LIGHTING	
ELECTRONIC DOOR POSITION SWITCH SECURITY ALARM	
CONVEX MIRROR	
LARGE MONITORS FOR VIEWING CAMERA/VIDEO SURVEILLANCE FEEDS	
SECURITY SYMBOLS LEGEND	
CARD ACCESS/READER ELECTRIC STRIKE	
CAMERA (VIDEO SURVEILLANCE)	

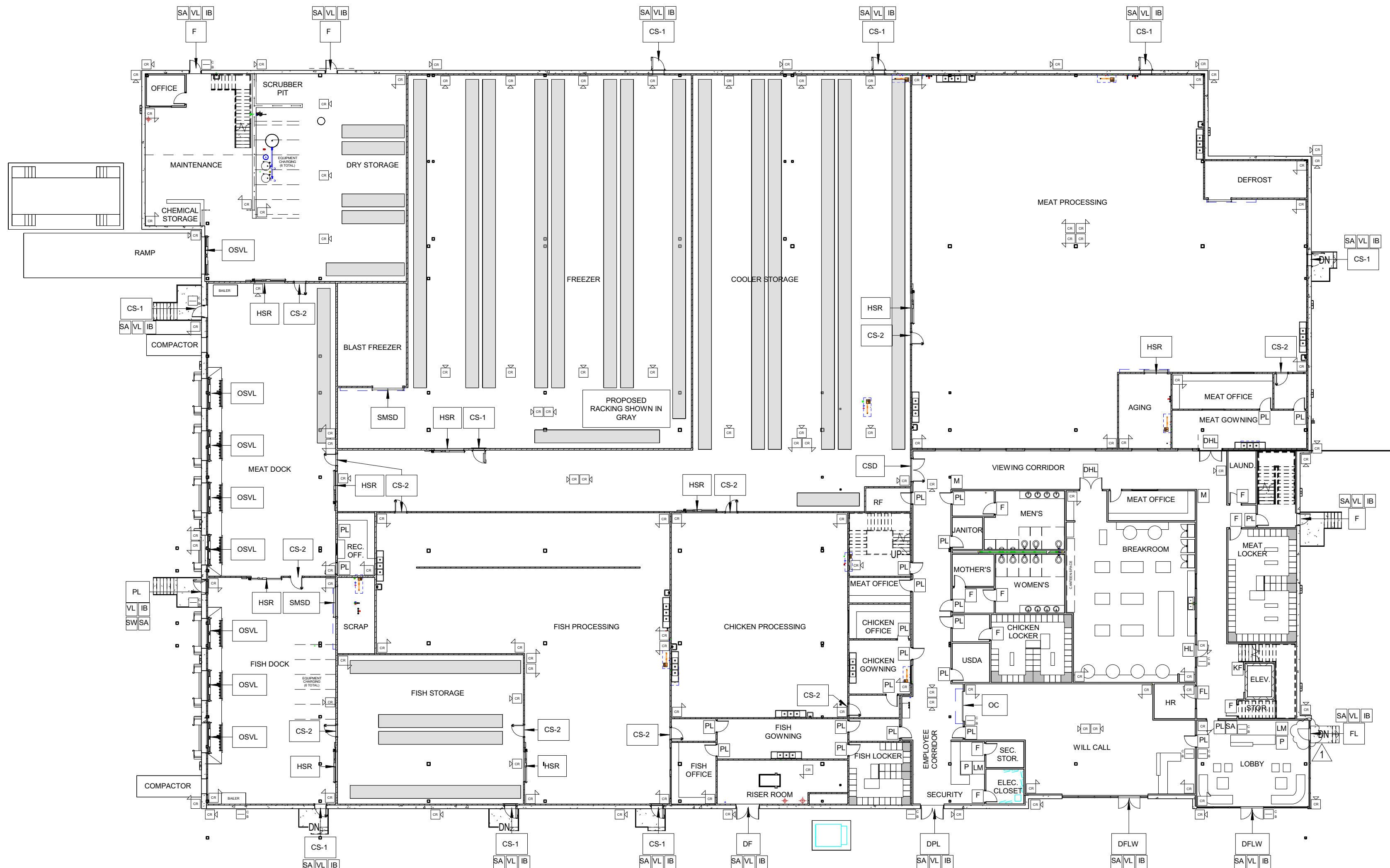
- GENERAL NOTES**
- HARD WIRED SECURITY SYSTEM WITH BURGLAR ALARM WILL BE INSTALLED, RUNNING, AND MONITORED BY SECURITY TEAM AT ALL TIMES (DURING AND AFTER BUSINESS HOURS).
 - SECURITY PERSONNEL WILL BE ON SITE 24/7.
 - AUDIO AND VIDEO INTERCOM WILL BE INSTALLED AT ALL SOLID EXTERIOR DOORS THAT DO NOT HAVE A VISION LITE AND MONITORED BY SECURITY TEAM AT BOTH LOBBY AND SECURITY DESKS.
 - ALL EXTERIOR DOORS WILL HAVE NON-REMOVABLE DOOR HINGE PINS.
 - ELECTRONIC DOOR POSITION SWITCHES WILL BE INSTALLED AT ALL EXTERIOR DOORS TO MONITORED/DETECT THE OPEN OR CLOSED STATUS OF DOORS AND SEND STATUS BACK TO SECURITY SYSTEM.
 - BLIND AREAS NOT COVERED BY SECURITY CAMERAS HAVE CORNER / CONVEX SECURITY MIRRORS INSTALLED TO ASSIST IN VISIBILITY AROUND BLIND SPOT CORNERS.
 - INTERNAL WIFI SYSTEM WILL BE ENCRYPTED AND PASSWORD PROTECTED.
 - ALL OFFICE DOORS WILL HAVE A PARTIAL LITE WITH SECURITY GLASS.
 - ELEVATOR WILL HAVE ACCESS CONTROL BY 1ST FLOOR FOB.
 - PANIC BUTTONS WILL BE PROVIDED AT MAIN ENTRY POINTS OF BUILDING, ALONG WITH PORTABLE LANYARD IN INSTANCE ALARM IS COMPROMISED.
 - NO KEYS WILL BE STORED ON SITE.



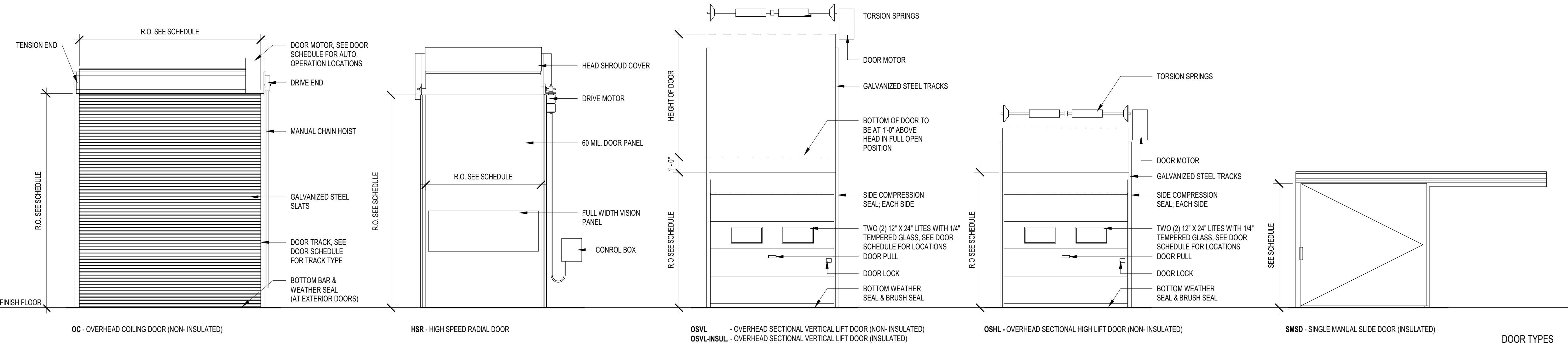
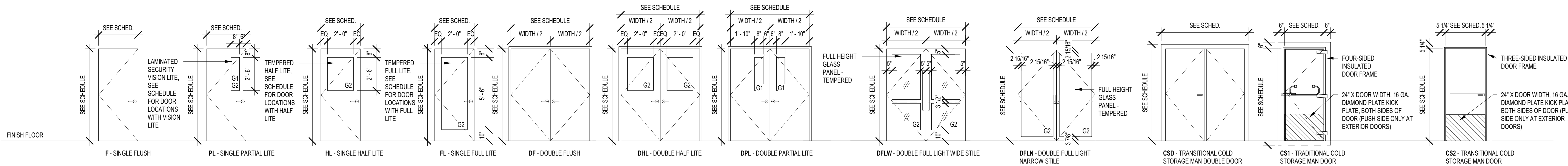
2 SECURITY PLAN - PARTS MEZZANINE 24X36
3/64" = 1'-0"



1 SECURITY PLAN - OFFICE MEZZANINE 24X36
3/64" = 1'-0"



3 SECURITY PLAN - OVERALL FIRST FLOOR PLAN 24X36
3/64" = 1'-0"



DOOR TYPES

REVISIONS & BULLETINS:		
NO.	DATE	DESCRIPTION
1	04.15.2024	REVISION 1 - DRC COMMENTS